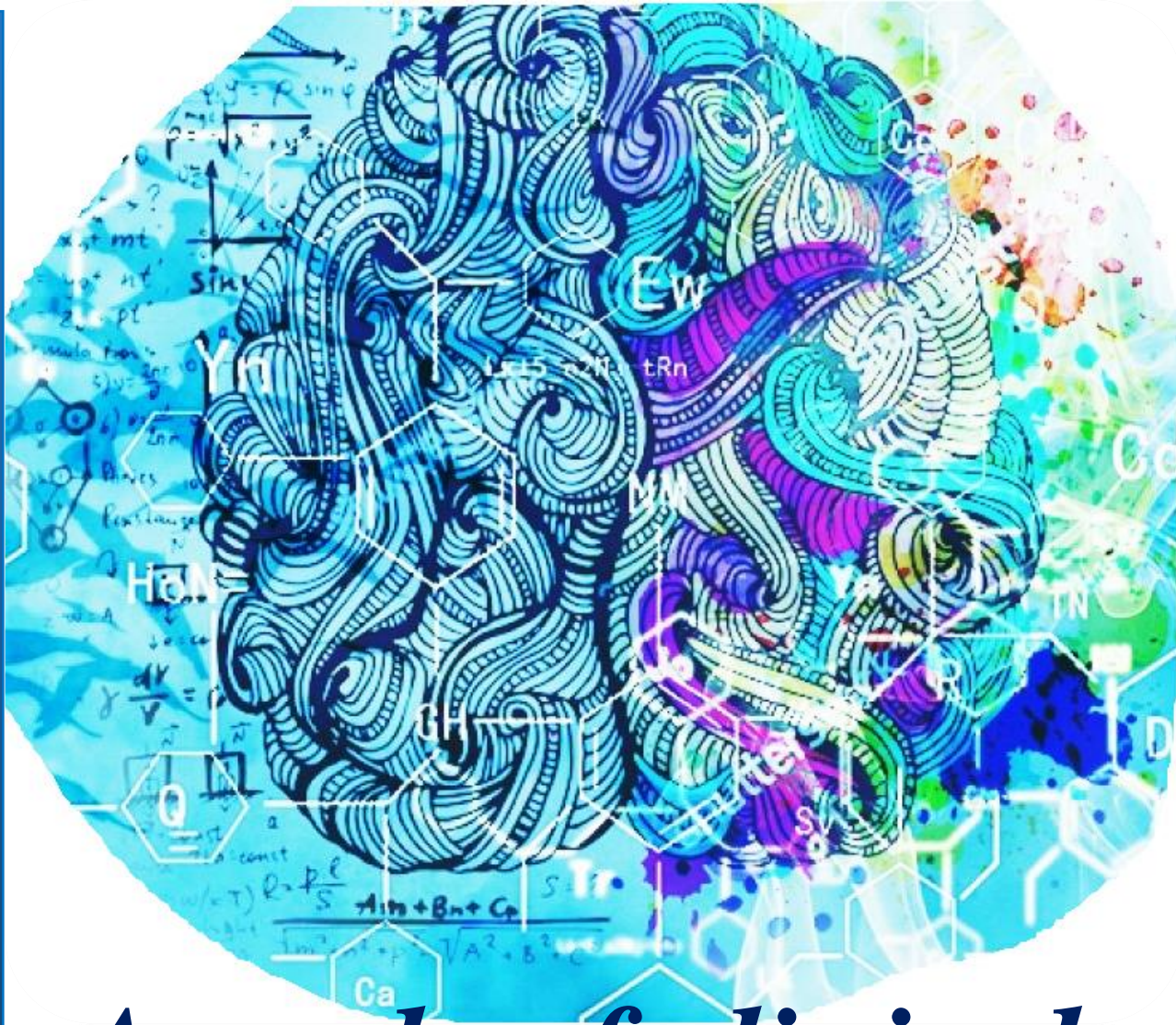


2024 Volume N 1

Issue 1

AJCD
2024

<https://tadqiqot.uz/index.php/spjacd>



Annals of clinical disciplines



ЎЗБЕКИСТОН РЕСПУБЛИКАСИ СОҒЛИҚНИ САҚЛАШ
ВАЗИРЛИГИ
БУХОРО ДАВЛАТ ТИББИЁТ ИНСТИТУТИ

ANNALS OF CLINICAL DISCIPLINE

АННАЛЫ КЛИНИЧЕСКИХ ДИСЦИПЛИН

КЛИНИК ФАНЛАР ЙИЛНОМАСИ

Научно-практический журнал по всем направлениям медицины
основан в 2024 году
Бухарским государственным медицинским институтом
Выходит один раз в 3 месяца

ГЛАВНЫЙ РЕДАКТОР – Ш.Ж. ТЕШАЕВ

Редакционная коллегия:

*М.Ж. Саноева, У.К. Абдуллаева, Д.А. Хасанова, М.Н. Исматова, С.С.
Давлатов, А.Р. Облокулов, Ш.Т. Ёроқов, Н.У. Нарзуллаев,
Ш.Б. Ахророва, В.Р. Акрамов, У.С. Мамедов, И.К. Садуллоева, Г.Ж.
Жарилкасинова, А.А. Саидов, Н.Н. Каримова, Д.А. Набиева*

Учредитель Бухарский государственный медицинский институт

2024, Volume 1, № 1

Адрес редакции:

Республика Узбекистан, 200114, г. Бухара, ул. Гиждуван, 23

Телефон: +998652230050

Сайт: <https://tadqiqot.uz/index.php/spjacd>

e-mail:

abumkur14@gmail.com

О журнале

Журнал зарегистрирован в Агентство информации и массовых коммуникаций при Администрации Президента Республики Узбекистан № С-239963 от 14 марта 2024 года

Индексация журнала

<https://scholar.google.com>

Редакционный совет:

Н.А. Нуралиев (Бухара)

А.Г. Гадаев (Ташкент)

Г.Н. Собирова (Ташкент)

М.М. Каримов (Ташкент)

У.К. Қаюмов (Ташкент)

Л.Б. Новикова (Башкирия)

О.И. Летяева (Россия Федерацияси)

И.В. Реверчук (Балтика)

Edip Gonullu (Турция)

Eva Lietto (Италия)



Глубокоуважаемые авторы, читатели и друзья!

От чистого сердца поздравляю Вас с открытием нового научно-практического журнала в сфере медицины!

В этот священный месяц Рамадан мне хочется поздравить надёжную редакторскую команду с благополучным открытием журнала, пожелать творческих успехов редакционному совету, поблагодарить наших новых авторов, читателей и друзей.

Желаю журналу долголетия, творческих удач, продолжения плодотворного сотрудничества с уже печатавшимися на его страницах авторами и знакомством с новыми именами, здоровья и успехов всем в будущем.

Итак, впереди новое плавание, новые замыслы, новые открытия. Приглашаем всех опубликовать ваши научные работы в новом научно-практическом журнале "Анналы клинических дисциплин"!

Главный редактор - ректор Бухарского государственного медицинского института, профессор Ш.Ж. Тешаев.

- Najmutdinova D.K., Miraxmedova H.T., Xudaybergenova D.H.** Immunological aspects of kidney damage in post-covid patients with type 2 diabetes mellitus.....107
- Xikmatova M.F.** Violation of dynamic autoregulation of renal blood flow in rats with a diet high in NaCl.....114
- Абдуманнонов А.И., Каримова М.М.** Йод танқислиги мавжуд бўлган худудларда 1-тур қандли диабет бор аёлларнинг қалқонсимон беши функционал ҳолатини ўрганиш.....125
- Umarov U.N., Jumayeva Z.J.** Qiyosiy jihatdan maktabgacha va maktab yoshidagi bolalarda allergik rinitning klinik kechish va tarqalish xususiyatlari.....131
- Алимова Х. А., Каримова Н.Н.** Предгравидарная подготовка женщин с TORCH – инфекцией и с неразвивающейся беременностью в анамнезе.....137
- Ziyayeva F.K., Djurayeva E.R., G‘aniyeva N.A.** Tizimli qizil yugurik va yurak-qon tomir patologiyasi: zamonaviy talqinlar.....142
- Вынар Н.Р., Игумнов С.А.** Литературный обзор по теме “биполярное аффективное расстройство 2-го типа: психопатология, методы диагностики и лечения”.....148
- Бадритдинова М.Н., Орзикулова Ш.А., Язмуродов Ф.М.** Метаболик синдромда диетотерапиянинг махсус алгоритмларини амалиётда қўллаш.....153
- Ахментаева Д.А., Нурмахан Э.К., Мынжасарова М.А.** Эффективность применения препаратов SGLT2 при СД II типа.....162
- Абдуллаев Р.Б.** Экологик ноқулай шароитда яра касаллигини даволашда янгича ёндашиш.....170
- Пулатова Ш.Х., Шарипов Б.Р.** Достижения и проблемы педиатрической анестезиологии и интенсивной терапии.....176
- Razikova D.K.** Ways to improve diagnosis, treatment and prevention of atopic cheilitis in children.....184

Najmutdinova D.K., Miraxmedova H.T., Xudaybergenova D.H.
Immunological aspects of kidney damage in post-covid patients with type 2 diabetes mellitus. Annals of clinical disciplines. 2024, Vol. 1, Issue 1, pp. 107-113

UDC: 616.379-008.64-06:578.834.1

IMMUNOLOGICAL ASPECTS OF KIDNEY DAMAGE IN POST-COVID PATIENTS WITH TYPE 2 DIABETES MELLITUS

Najmutdinova D.K., Miraxmedova H.T., Xudaybergenova D.H.
Tashkent Medical Academy, Tashkent, Uzbekistan.

Abstract. The article highlights considerations related to the emergence of COVID-19 and its spread in the world, challenges for medical workers, rapid diagnosis of infection, provision of specialized medical care, and prevention of complications. The article also reflects an analysis and consideration of modern approaches to the clinical and pathogenetic features of the epidemiology of the disease, complications, and diagnosis.

Keywords: COVID-19, type 2 diabetes mellitus, interleukin, chronic kidney disease.

ИММУНОЛОГИЧЕСКИЕ АСПЕКТЫ ПОРАЖЕНИЯ ПОЧЕК У ПАЦИЕНТОВ С САХАРНЫМ ДИАБЕТОМ 2 ТИПА ПОСЛЕ COVID

Назмутдинова Д.К., Мирахмедов Х.Т., Худайбергенова Д.Х.
Ташкентская Медицинская Академия, Ташкент, Узбекистан.

Аннотация. В статье освещены вопросы, связанные с появлением COVID-19 и его распространением в мире, проблемами для медицинских работников, быстрой диагностикой инфекции, оказанием специализированной медицинской помощи и профилактикой осложнений. В статье также отражен анализ и рассмотрение современных подходов к клинико-патогенетическим особенностям эпидемиологии заболевания, осложнений и диагностики.

Ключевые слова: COVID-19, сахарный диабет 2 типа, интерлейкин, хроническая болезнь почек.

2 TIP QANDLI DIABETI BOR BEMORLARDA COVIDDAN KEYINGI BUYRAK ZARARLANISHINING IMMUNOLOGIK JIHLARI

Nazmutdinova D. K., Miraxmedov X. T., Xudaybergenova D. X.
Toshkent Tibbiyot Akademiyasi, Toshkent, O'zbekiston

Annotatsiya. Maqolada COVID-19 ning paydo bo'lishi va uning dunyoga tarqalishi, tibbiyot xodimlarining muammolari, infeksiyani tezkor tashxislash, ixtisoslashtirilgan tibbiy yordam ko'rsatish va asoratlarning oldini olish bilan

bog'liq masalalar yoritilgan. Maqolada, shuningdek, kasallikning epidemiologiyasi, asoratlari va diagnostikasining klinik va patogenetik xususiyatlariga zamonaviy yondashuvlarni tahlil qilish va ko'rib chiqish aks ettirilgan.

Kalit so'zlar: COVID-19, qandli diabet 2 tur, interleykin, surunkali buyrak kasalligi.

The COVID-19 pandemic (CoronaVirus Disease 2019) is characterized by high levels of morbidity and mortality. It has already affected more than five hundred million people in the world. Research results indicate that patients with diabetes are more prone to the new coronavirus infection. According to various studies, the prevalence of diabetes mellitus (DM) in patients with COVID-19 ranges from 5 to 36%; in Uzbekistan, it is up to 25% [1,2].

Considering that diabetes is one of the most important comorbidities in patients with COVID-19, there has recently been a need to highlight all the epidemiological and pathophysiological aspects associated with these pathological conditions to offer useful tools for the most effective control.

One of the most severe manifestations of diabetes mellitus, regardless of its type, is diabetic nephropathy, which largely determines the level and severity of complications, mortality and disability of patients [10,4,8]. This severe complication of diabetes mellitus leads to the formation of end-stage renal failure in 30% of patients [9]. Diabetic nephropathy is considered a clinical syndrome characterized by microalbuminuria or proteinuria, a progressive decrease in glomerular filtration rate, and the development or worsening of arterial hypertension [3,5].

More and more attention is being paid to the study of the state of the immune system in patients with diabetes mellitus [1, 6, 7]. It has been established that the immune system plays an important role in the occurrence of both the disease itself and its complications [4, 6]. The increase in the number of patients with diabetes mellitus, both type 1 and type 2 and the significant prevalence of diabetic nephropathy among them are largely associated with the disorder of the immune system in patients with diabetes mellitus.

Thus, many researchers associate the appearance and worsening of complications with the activation of immune factors [1, 7]. The development of microangiopathies in diabetes mellitus is associated with a chronic immunoinflammatory process and the formation of immune complexes.

Activated monocytes-macrophages, immunoglobulins, cytokines, adhesion molecules, and end-glycosylation products are directly involved in this. The role of pro-inflammatory cytokines in stimulating the initiation and progression of vascular complications in diabetes mellitus has been shown [7]. However, issues related to the state of cellular immunity in different types of diabetes mellitus have not been sufficiently studied.

The results show that long COVID patients experienced a decrease in eGFR approximately 2.96 ml/min (3.39% decrease from baseline) one year after COVID-19 infection. Although everyone naturally loses some kidney function over time, a decrease of 1 ml/minute over this period is more typical for healthy people. The decline in kidney function was highest in patients hospitalized for COVID-19 at 6.72%, followed by patients with diabetes at 6.15%.

The purpose of the research is to study the characteristics of changes in humoral immunity in patients with type 2 diabetes mellitus and diabetic nephropathy. Identification of epidemiological and pathophysiological relationships between diabetes mellitus and COVID-19, and assessment of prognosis to ensure better treatment results in this category of patients.

Material and methods . In this study, in 2021-2022, patients aged 45 to 65 years (main group I) who had COVID-19, suffering from type 2 diabetes complicated by BCS (n=65), and group II type 2 diabetes complicated by BBS without COVID -19 (n=20), group III conditionally healthy patients with covid-19 (n=15). Laboratory data include: indicators of renal function (creatinine, urea, cystatin C, glomerular filtration rate), hemostasis parameters (D-dimer, reference value up to 500 ng/l), IgG COVID-19, Ig S-RBD COVID-19. Glomerular filtration rate (GFR) was calculated using the CKD-EPI Crea-Cys (Chronic Kidney Disease Epidemiology Collaboration) formula. Exclusion criteria from the study: patients previously on renal replacement therapy, hepatorenal syndrome, urolithiasis, kidney damage due to hypertension.

Table 1**Characteristics of patients by group (n=100)**

Groups	Gender		Age	Duration of Type 2 Diabetes (years)
	Male	Female		
Group I (n =65)		30	62.9±11.1	9.9±1.8
	%	41.7		
Group II (n=20)		13	56.4±6.8	9.1±1.9
	%	56.7		
Group III (n =15)		7	44.1±7.3	
	%	45		

Inclusion criteria for the study: age 45 years and older. Gender: men and women. Patients with a history of pneumonia of viral etiology. All patients from whom IgG COVID-19 and Ig S-RBD COVID-19 were taken from venous blood.

Table 2

Features and clinical data of the post-COVID-19 patients

Nº	Variables	1 st group (DM2T,CKD, COVID-19) n=65	2 nd group (DM2T, CKD without COVID-19) n=20	3 rd group (DM2T and COVID-19) n=20	p Value
1	Gender Male(%) Female (%)	29(44.61) 36(55.38)	11(55.00) 9(45.00)	8 (40.00) 7 (60.00)	<0.001
2	Age (years), median (IQR)	59 (61, 77)	60 (65.25)	60(65.25)	<0.001
3	BMI/(kg/m ²) median (IQR)	24.79 (22.91, 26.83)	23.76 (21.96, 26.98)	22.67(20.89, 25.87)	0.043
4	Hypertension (%)	47 (72.30)	17 (85.00)	12 (60.00)	0.187
5	cardiovascular disease (%)	35 (53.84)	8 (40.00)	6 (30.00)	0.881
6	Diabetic retinopathy (%)	49 (75.38)	6 (30.00)	5 (25.00)	0.043
7	HbA1C(%), median (IQR)	7.75 (6.60, 9.10)	7.10 (6.40, 8.05)	7.15 (6.55, 8.10)	0.042
9	TG/(mmol/L), median (IQR)	2.41 (1.73, 3.74)	1.32 (1.02, 1.91)	1.12 (0.92, 1.73)	<0.001
10	ApoB/(mmol/L), median (IQR)	1.42 (1.23, 1.67)	0.81 (0.70, 0.94)	1,03 (0.97, 1.12)	<0.001
11	Fasting blood glucose /(mmol/L), median (IQR)	5.94 (4.78, 7.92)	5.96 (4.64, 7.43)	6.13(5.73, 7.24)	0.492
12	Creatinine/ (µmol/L), median (IQR)	152.15 (128.25, 152.15)	159.50 (122.00, 252.58)	85.15 (59.5, 77.5)	0.898
13	CysC/(mg/L), median (IQR)	1.98 (1.57, 2.60)	1.95 (1.55, 2.86)	0.79 (0.67, 0,1)	<0.001
14	eGFR/[mL/(min·1.73m ²)], median (IQR)	40.24 (25.62, 51.38)	42.04 (28.22, 50.46)	87.69(90.5, 63.5)	<0.001
15	D-dimer(µg/ml) median (IQR)	1.77(0.3, 34.00)	0.77(1.5, 46.5)	1.15(2.00, 56.00)	0.492
16	IL 17A (pg/ml) median (IQR)	45.79(41.5, 81.00)	38.41(41.00, 81.00)	1.80(2.00 78.00)	<0.001
17	IL11 (pg/ml) median (IQR)	809.83(19.00, 94.00)	793.83(416.94, 178.00)	7.25(8.00, 72.00)	<0.001
18	TGFβ1 (ng/ml) median (IQR)	5.27(12.5, 178.00)	5.24(12.5, 175.00)	2.94(10.00, 75.00)	<0.001
19	COVID-19 IgG S-RBD (BAU/ml) median (IQR)	927.50 (234.00, 449.00)	6.08(6.00, 5.00)	621.47(129.00, 1165.00)	<0.001
20	SARS-COV-2 (COVID- 19) IgG antibodies (U/mL) median (IQR)	971.74 (129.00, 1165.00)	4.73(5.00, 5.00)	1971.74(92.00, 371.00)	<0.001

Table 2 shows creatinine, urea, cystatin C, glomerular filtration rate), D-dimer, IgG COVID-19, IgG S-RBD COVID-19, IL11, IL17A, and TGF- β 1 concentrations were measured in blood/serum samples of control subjects and three groups of COVID-19 patients. A statistically significant difference in Creatinine between the 1st group, and the group 3rd of COVID-19 patients (152.15 ± 45.6 vs 85.15 ± 34.2 , $p < 0.001$) are shown, while the difference between 1st group and 2nd group of COVID-19 patients was not significant (152.15 ± 45.6 vs 159.50 ± 86.0 , $p = 0.091$).

Also, statistically significant differences in serum levels of CysC between the 1st group and group 3 as well as between the 2nd and 3rd group of COVID-19 patients were shown. In contrast, the difference between 1st group and group 2 patients was not significant, it shows that CKD impacts to level of Cystatin C.

Analyzing the difference between serum levels of D-dimer among the groups shows a significant difference between the levels of the 1st and 2nd group, as there's a dramatic decrease in the levels of the 2nd group. While 1st (the patients with COVID-19) and 3rd group (patients without COVID-19) had minimal difference it also shows that CKD affects the level of D-dimer.

On measuring the concentration of eGFR, minimal elevation of eGFR can be seen in the 2nd group, as compared to the 1st. But again, there's a significant difference between the levels of 1st and 3rd group. On the other hand, while analyzing the levels of IgG S-RBD, significant differences in levels can be seen in all three groups. Levels of 3rd group which includes patients without COVID-19 have the lowest level among the three.

Serum levels of IgG antibodies are significantly higher in group 3rd and group 1st. While group 3rd hit the peak, group 2nd had the lowest IgG serum levels, showing the severe impact of COVID-19 on other groups.

Results. The average age was 62 years, 58% of them were women. The level of D-dimer was determined in all patients from the entire study population: 34 (70%) of them showed an elevated level associated with a high risk of thromboembolic complications. In 12 cases (35%) the d-dimer level exceeded 1.5 times, in 11 cases (32.5%) 2 times, and in the remaining 11 cases (32.5%) 3 times or more. The majority of the studied patients had chronic concomitant diseases: arterial hypertension, coronary heart disease, diabetes mellitus, and chronic lung diseases, 65%, 49%, 37%, and 6%, respectively. Among them, patients with one concomitant disease are 19 (19%), comorbid - 44 (43%), and multimorbid - 31 (30%). There were no concomitant diseases in 8 (8%) patients. To identify correlations between the stage of CKD and the degree of lung damage, we divided patients with kidney damage into three groups according to GFR.

Conclusion. In conclusion, it should be noted that the new coronavirus infection can be considered a systemic disease since it is not limited to damage to one organ. The presence of diabetes mellitus in patients with COVID-19 aggravates the severity of the disease and is accompanied by an increased risk of

adverse outcomes, including increased mortality. Some specific pathogenetic mechanisms have been identified that likely predispose to this. Factors that cause such adverse events are of practical interest as potential targets for effective therapy. Inflammation has a significant influence on the pathogenesis of DN, and anti-inflammatory processes may have a significant impact on the protective effect on the kidneys. Tissue damage activates innate immunity through the recognition of DAMPs by various PRRs during hyperglycemia, causing several inflammatory reactions. Persistent inflammation caused by long-term kidney damage can lead to the development of DN. Various proinflammatory pathways are involved in the progression of DN. Several studies focusing on innate immune pathways in DN have shown promising results. Given the critical role of inflammatory pathways, a combination treatment approach including both anti-inflammatory and antidiabetic drugs may provide better protection against DN. However, clinical trials of anti-inflammatory drugs are just beginning. Patients may become more susceptible to infection in the absence of specific anti-inflammatory treatment. In addition, TLR suppression in patients with DN may increase the risk of tumorigenesis and malignancy recurrence. Therefore, the regulation of innate immune pathways and the development of more specific and less toxic treatments for DN require further study in the future.

References

1. Abdullaey SH., Igamberdiyeva R., Sharapov.O. Kidney damage in Covid-19: clinical-pathogenetic aspects and management of patients with chronic kidney disease // *Clinical nephrology* 13.1 (2021): 63-67.
2. Avdeev S.N., Gaititdinova V.V., Merzhoeva Z.M., Berikkhanov Z.G., Medvedeva I.V., Gorbacheva T.L. N-acetylcysteine in the complex treatment of COVID-associated pneumonia // *Regular issues of "RMJ"* No. 3 dated March 31, 2021 pp. 13-18.
3. Gasanov M.Z., Batyushin M.M., Litvinov A.S., Terentyev V.P. Acute Disease Quality Initiative (ADQI) 25th Working Group Consensus Report on COVID-19-Associated Acute Kidney Injury: Translation of Recommendations // *Clinical nephrology*. 2021;1:27-49
4. Kulchenko N.G. Epidemiology of kidney disease in patients with COVID-19 // *Research and practice in medicine*. 2020; 7(3): 74-82.
5. Maltseva L.D., Vasalatiy I.M., Isaakyan Yu.A., Morozova O.L. Mechanisms of acute kidney injury in Covid-19 // *Nephrology and dialysis*. 2021; 23(3):352-365.
6. N.A. Tomilina, N.F. Frolova, L.Yu. Artyukhina, S.S. Usatyuk, T.A. Buruleva, E.N. Dyakova, A.V. Frolov, K.E. Loss, M.L. Zubkin3, I.G. Kim2, G.V. Volgina, Covid-19: connection with kidney pathology, *Nephrology and dialysis* // T. 23, No. 2 2021 p.147-159

7. N.A. Tomilina, G.V. Volgina, Mechanisms of kidney damage during COVID-19, © Copyright 2012 – 2022/ Design by Prospect Company
8. Vykhristenko L.R., Schastlivenko A.I., Bondareva L.I., Sidorenko E.V., Muzykova O.G., Kidney damage due to COVID-19 infection // Vestnik VSMU.-2021.-No.1.-page 7-23
9. S.Yu. Chikina, Antioxidant effects of N-acetylcysteine in modern clinical practice, "Effective pharmacotherapy. Pulmonology and otorhinolaryngology" No. 1 2011
10. Shamkhalova M.Sh., Mokrysheva N.G., Shestakova M.V. COVID-19 and kidneys. Diabetes. 2020;23(3):235-241.
11. Stolyarevich E.S., Frolova N.F., Artyukhina L.Yu., Varyasin V.V. Kidney damage in Covid-19: clinical and morphological manifestations of renal pathology in 220 patients who died from Covid-19. Nephrology and dialysis. 2020. 22(Special issue):9-56. doi: 10.28996/2618-9801-2020-Special_Issue-46-55