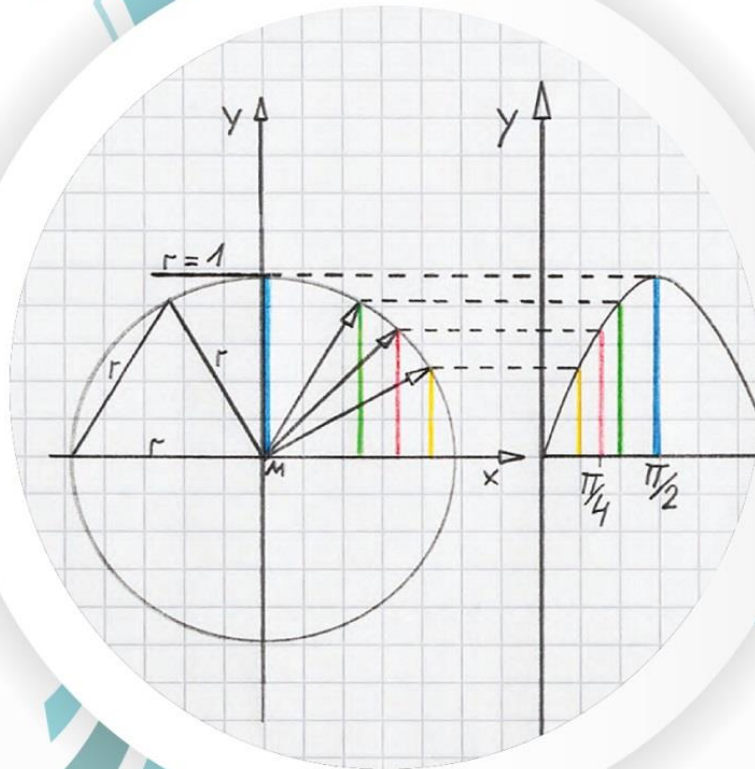


INTERNATIONAL JOURNAL OF

ENGINEERING MATHEMATICS: THEORY AND APPLICATION



Indexed by:



Universal
Impact Factor



IMPACT FACTOR
SEARCH

Editorial Team

G. Ahmed

Professor of Computational Engineering Mathematics and Numerical Analysis
Department of Engineering Physics and Mathematics
Associate editor-in-Chief
Dr. Hamed Daei Kasmaei
PhD in Applied mathematics-Numerical analysis and computational
Department of Mathematics and Statistics,
Honor President of IEEMS
Mahim Ranjan Adhikari
Department of Mathematics
Calcutta University
India
Carlo Cattani Professor, Tuscia University, Viterbo
Department of Economy and Enterprise DEIM
Italy E-mail: ccattani@unisa.it

Dr. Sunil Kumar National Institute of Technology
Jamshedpur Department of Mathematics
India Email: skiitbhu28@gmail.com

Praveen Agarwal

Ph.D., Professor
Anand International College of Engineering
Department of Mathematics Jaipur India
Email: goyal.praveen2011@gmail.com

Thomas Korimort Mathematician
Computer Scientist Dr. tech. Dipl.-Ing
AMS University of Leoben Vienna University of
Technology Austria Email: tomkori@gmx.net

Dr. Stephen Kirkup
Lecturer in Nuclear Science / Engineering
School of Engineering Computing and Technology
Building, CM138 University of Central Lancashire
United Kingdom Email: smkirkup@uclan.ac.uk

Dr Mehmet Senol
Nevsehir Haci Bektas Veli University Department of
Mathematics Nev_sehir
Turkey
Email: msenol@nevsehir.edu.tr

Dr. Muhammad Sadiq Hashmi
Associate Professor
Department of Computer Science
COMSATS Institute of Information Technology
Sahiwal Campus
Pakistan
Email: sadiq.hashmi@gmail.com

Hector Vazquez Leal
Full Time Professor
School of Electronic Instrumentation
University of Veracruz
Mexico Email: hvazquez@uv.mx
Dr. Jyotindra C. Prajapati
M.Sc., M. Phil., Ph.D., MIMS, MISTE
Principal, Faculty of Science
Marwadi University
Rajkot-Morbi Highway
RAJKOT- 360003, GUJARAT
India

Hasan Bulut

Faculty of Science Department of Mathematics Firat
University Elazig Turkey
E-mail: hbulut@firat.edu.tr

Fethi Bin Muhammad Belgacem Department of
Mathematics Faculty of Basic Education
PAAET, Al-Ardhiya Kuwait E-
mail: fmbelgacem@gmail.com
Avishk Mahim Adkhaira
Associate Professor of Mathematics Calcutta
University
India E-mail: math.mra@gmail.com

János Kurdics
Professor of Mathematics University of Nyiregyhaza
Hungary Academic Member of ATINER
Athens E-mail: kurdics@nyf.hu

CONTACT

Professor of Computational Engineering Mathematics and
Numerical Analysis
Faculty of Engineering
Zagazig University
Zagazig
P. O. 44519
Egypt
<http://iejemta.com/>
Email: sgamil@zu.edu.eg



Application of differential equations in the field of medicine

M.I.Bazarbayev, U.A.Bozarov, V.G.Maxsudov, E.Ya.Ermetov

Tashkent Medical Academy, Department of "Biomedical Engineering, Informatics and Biophysics".

Abstract: In this article, doctors describe the processes occurring in the human body, use differential equations to solve medical problems, the law of dissolution of the forms of substances in tablets, determining the amount of the active substance that should be released from the solid dosage form into the solution medium, an example of the breakdown of a drug in the human body, the use of the "Predator-prey" model in the treatment of oncological diseases, the spread of an infectious disease based on the epidemic model.

Keywords: differential equation, predator-prey model, logarithm property, integral, system trajectories, derivative, pharmacopoeia.

The processes taking place in the modern world require in-depth knowledge of specialists and high quality. Today, due to globalization, technology is improving every year, new knowledge and research in the field of medicine is emerging. In order to create technology, people need calculations, which would not be complete without differential equations. In the modern world, activities are changing with the use of mathematical modeling of medical personnel, statistical data and other phenomena used in practice.

We show the use of differential equations in medicine using the simplest mathematical model of an epidemic as an example. The use of differential equations in biology and chemistry also has a medical meaning, because medicine plays an important role in the study of various biological populations (for example, the population of pathogenic bacteria) and chemical reactions in the body (for example, enzymatic reactions).

The role of mathematics in medicine is to aid in the implementation of diagnostic procedures. Currently, the methods of treatment and diagnosis of diseases have been significantly expanded. A significant number of medical centers use mathematical modeling methods, which increase the accuracy of a large number of established diagnoses. Knowing the basics of mathematics is used by doctors to describe the processes occurring in the human body. In many universities, students study mathematics along with basic medical sciences. The main problem of applied mathematics is the selection of an initial mathematical model, which is not felt in any field of knowledge as it is in biology and medicine.

The section "Differential equations" is one of the largest sections of modern mathematics. It intersects with many fields of activity. A differential equation is an equation involving unknown functions, their derivatives of different orders, and arbitrary variables. The same differential equations are widely used in practice, for



example, calculating the result of chemical reactions, calculating the main income of the company, current dynamics over time, demographic indicators in a certain region are calculated using differential equations.

The topic of this work will always be relevant, because mathematical methods are used to solve many problems, including in the field of medicine.

Every year, scientists discover more and more new diseases and find treatment methods. And none of this can be done without mathematics.

We will consider the application of differential equations to solve specific medical problems.

1. The law of dissolution of substance forms in tablets.

The "dissolution" test is designed to determine the amount of active substance that should be released from a solid dosage form into a solution medium over a period of time under the conditions specified in the pharmacopoeia article or regulatory documents.

Let n be the remaining amount of the substance in the tablet until the dissolution time t . In it

$$\frac{dn}{dt} = -kn$$

where k is the dissolution rate constant. The minus sign in the equation means that the number of forms of matter decreases over time.

Let's see the solution.

In a differential equation, we isolate the variables and then integrate it:

$$\begin{aligned}\frac{dn}{n} &= -kdt \\ \int \frac{dn}{n} &= - \int kdt\end{aligned}$$

From here:

$$\ln|n| = -kt + \ln|C|$$

Using the logarithm property, we get:

$$|n| = C_1 e^{-kt}$$

here $C_1 = e^c$ arbitrary constant number.

Using the module property, we get:

$$n = C_2 e^{-kt}$$

From here: $C_2 = \pm C_1$ arbitrary constant number

$t = 0$ at $n = n_0$ assuming that at , we $C_2 = n_0$ we get , so:

$$n = n_0 e^{-kt}$$

The formula represents the law of dissolution of dosage forms of the substance from tablets in an integral form. From the equation:

$$n = n_0 e^{-kt}$$

k – we find the melting rate:

$$k = \frac{1}{t} \ln\left(\frac{n_0}{n}\right)$$



Half-life of tablets $t = t_{\frac{1}{2}}, n = \frac{n_0}{2}$

$$\frac{n_0}{2} = n_0 e^{-kt_{\frac{1}{2}}},$$

$$\frac{1}{2} = e^{-kt_{\frac{1}{2}}}$$

We logarithmize both sides of the equation:

$$\ln \frac{1}{2} = -kt_{\frac{1}{2}}$$

$t_{\frac{1}{2}}$ we find, $t_{\frac{1}{2}} = \frac{\ln 2}{k} = \frac{0,693}{k}$.

2. An example of drug breakdown in the human body.

Problem: A drug was injected into the patient's body, what part of the drug will be broken down after 8 hours, if 4 mg of the drug has halved its mass after 4 hours?

Solution: To solve this problem, it is necessary to determine the time-dependent change in the amount of medicinal substances in the body. Specify: $N_0 = 8$ – initial amount of drug (in mg), $N_2 = 4$ – the amount of the drug after two hours, where N is the amount of the drug at any time. The rate of change of the amount of the drug is proportional to the amount of the drug at a certain time:

$$\frac{dN}{dt} = kn$$

The solution of this differential equation is the following expression describing the desired relationship:

$$N = Ce^{kt}$$

Using the initial conditions, we define C :

$$8 = Ce^{k0}$$

$$e^0 = 1 \text{ from equality}$$

$$C = 8$$

Consequently, $N = Ce^{kt}$. It is known that as soon as the drug was introduced into the body, its mass doubled after 4 hours. k we determine. For this, we put the values $t=4, N=4$ in the last equation and:

$$4 = 8e^{k4}$$

$$0,5 = e^{4k}$$

We logarithmize both sides of the equation:

$$\ln 0,5 = \ln e^{4k}$$

$$\ln 0,5 = 4k \ln e$$

$\ln e = 1$ we have the following equality:

$$k = \frac{\ln 0.5}{4}$$

The dependence of the amount of drug in the body on time can be written as follows:

$$N = 8e^{\frac{\ln 0.5}{4}t}$$



Now we can find out the amount of substance after 8 hours, for this we insert $t=8$ into the equation and get:

$$N = 8e^{\frac{\ln 0.5}{4} \cdot 8}$$

$$N = 8e^{\ln(0.5) \cdot 2}$$

$\ln 0,5 = -0,693$ because $\ln(0,5) \cdot 2 = -1,386$.

As a result:

$$N = 8e^{-1,386} = 8 \cdot 0,25 = 2$$

After 8 hours, the body will have 2 mg of the drug. During this time, $8-2=6$ mg was broken down. As a result, it turned out that 6 mg of the substance was broken down in 8 hours.

Currently, the "Prey-prey" model is used in medicine. In the modeling of oncological diseases, tumor cells are considered prey, and lymphocytes, which can suppress tumor motility, are predators. These methods help doctors determine the optimal treatment path and create new ways to fight them.

3. "Predator-prey" model.

x – number of tumor cells,

y – be the number of lymphocyte cells;

If there are changes in the number of tumor cells and lymphocytes over time, then we assume that x and y are continuous functions of time t .

x and y is called the state of the model.

Let's see how the state of the model changes.

$\frac{dx}{dt}$ – the rate of change in the number of tumor cells.

If there are no tumor cells, then the number of lymphocytes decreases. This relationship is linear:

$$\frac{dy}{dt} = -a_2y$$

The rate of change in the number of each species in the ecosystem is also proportional to its number, but only with a coefficient that depends on the number of individuals of another species. Thus, for tumor cells, this coefficient decreases with an increase in the number of lymphocytes, and for lymphocytes, it increases with an increase in the number of tumor cells. This relationship is also linear. Thus, we get a system of differential equations:

$$\begin{cases} \frac{dx}{dt} = a_1x - b_1xy \\ \frac{dy}{dt} = -a_2x - b_2xy \end{cases}$$

The resulting system of equations is called the Lotka-Volterra model.

a_1, a_2, b_1, b_2 – numerical coefficients (model parameters).

The nature of the model state change is determined by the values of (x,y) parameters. By solving this system of equations, it is possible to study the laws of health status change.



When studying a phenomenon, a mathematical model is first created that describes the basic laws that this phenomenon is subject to. In our examples, these laws are expressed in the form of differential equations. Mathematical models facilitate prediction, results of experiments in real systems allow learning.

An epidemic model.

This model describes the spread of an infectious disease in an isolated population. Individuals of the population are divided into three categories. The first class is the $x(t)$ -dimensional infected class (at time t) consisting of infected patients, for whom the incubation period of the infectious disease is assumed to be negligibly short. The second class of numbers is $y(t)$ -susceptible people, that is, people who can be infected by contact with infected patients. Finally, the third class consists of immunocompromised patients, divided into those who develop immunity or die from the disease. Its number is determined by $z(t)$. It is also assumed that the total population n is constant, that is, births, natural deaths and migration are not taken into account. There are two hypotheses based on the model:

1. The incidence at a certain time (t) is $x(t) \cdot y(t)$ - this hypothesis is based on the reasonable assumption that the number of cases is proportional to the number of encounters between sick and susceptible individuals, which in turn is proportional to $x \cdot y(t)$; thus, the number of class x increases and the number of class y decreases at the rate $a \cdot x(t) \cdot y(t)$ ($a > 0$);

2) grows proportionally to the number of individuals with immunity, i.e. at the rate $b \cdot x(t)$ ($b > 0$). As a result, we get the following system of equations.

$$\begin{cases} x'(t) = a \cdot xy - b \cdot x \\ y'(t) = -a \cdot xy \\ z'(t) = b \cdot x \end{cases}$$

Assignment. $x'(y) = -1 + b/ay$ show the.

Due to this problem, it is easy to see that the trajectories of the system have the form shown in Figure 1. Since we are only interested in the positive values of the variables, the equation is unnecessary, since $z = n - x - y$.

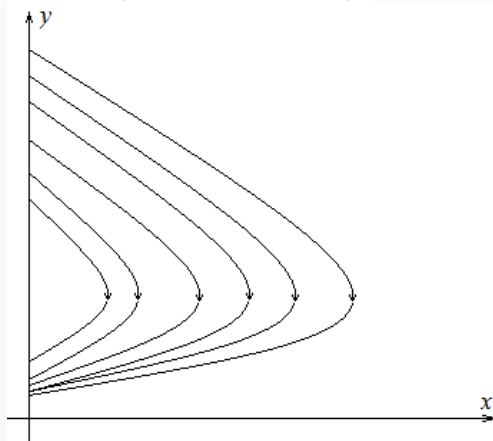


Figure 1. Trajectories of the system

In the presented work, we considered the solution of medical problems using differential equations, for example, the example of the breakdown of a drug in the human body, modeling of the treatment of oncological diseases. The mathematical apparatus for solving differential equations allows solving many problems of the natural science cycle in practice. Higher medical education implies the ability of specialists to apply their knowledge in various medical fields.

We will consider the formation of professional competencies of a specialist by applying mathematical knowledge in medicine.

The application of the knowledge of a medical specialist in the field of health care and medicine includes the implementation of economic activities of a medical organization. The responsibilities of an economist include: preparation of preliminary data for the preparation of economic and financial projects of a medical organization, calculation of the cost of medical services, calculation of necessary materials, development of measures for effective use of capital investments, material, labor and financial resources. An economist is also responsible for increasing labor productivity, reducing the cost of providing medical services, eliminating losses, determining the economic efficiency of labor and production organization, introducing new technologies and inventions, participating in marketing research and predicting the development of a medical organization, etc. should contribute.

References

1. Петровский, И. Г. Лекции по теории обыкновенных дифференциальных уравнений / И. Г. Петровский. – М., 1984. – 295 с
2. Закон растворения лекарственных форм вещества из таблеток [Электронный ресурс] // Poznayka.org. – Режим доступа: <https://poznayka.org/s8157t1.html>. – Дата доступа: 19.03.2019.
3. Рубецков, Д. И. Феномен математической модели Лотки-Вольтерры и сходных с ней / Д. И. Рубецков // Известия Вузов. Прикладная нелинейная динамика. – 2011. – № 2. – С. 69–87.
4. Maxsudov V.G. Technology of organization of modern lecture classes in higher education institutions. England: Modern views and research – 2021. 160-166 pp.
https://scholar.google.com/citations?view_op=view_citation&hl=ru&user=GGgl544AAAAJ&sortby=pubdate&citation_for_view=GGgl544AAAAJ:IWHjjKOFINEC
5. Maxsudov V.G. Improvement of the methodological basics of training of the section «Mechanical oscillations» in higher educational institutions. Dissertation. – Tashkent: 2018.
https://scholar.google.com/citations?view_op=view_citation&hl=ru&user=GGgl544AAAAJ&sortby=pubdate&citation_for_view=GGgl544AAAAJ:aqlVkmm33-oC.
6. Maxsudov V.G. Technology of lecture organization in modern education.- Washington, USA, Collations of scientific works. 2021. 160-163 pp.



https://scholar.google.com/citations?view_op=view_citation&hl=ru&user=GGgl544AAAAJ&sortby=pubdate&citation_for_view=GGgl544AAAAJ:qUcmZB5y_30C

7. Maxsudov V.G. The use of distance learning technologies in the creation of e-learning courses in higher education by professors and teachers of higher education institutions. Study guide. – Tashkent, 2021. Pp 256.

https://scholar.google.com/citations?view_op=view_citation&hl=ru&user=GGgl544AAAAJ&citation_for_view=GGgl544AAAAJ:LPZeul_q3PIC

8. Maxsudov V.G. Гармоник тебранишларни инновацион технологиялар асосида ўрганиш («Кейс-стади», «Ассесмент», «Венн диаграммаси» мисолида). – Тошкент, Замоновий таълим. №7., 2017. 11-16 б.

https://scholar.google.com/citations?view_op=view_citation&hl=ru&user=GGgl544AAAAJ&citation_for_view=GGgl544AAAAJ:L8Ckcad2t8MC

9. Махсудов В.Г., Эрметов Э.Я., Базарбаев М.И. Определение коэффициента трения качения с помощью маятника Обербека. – Москва: Актуальные проблемы гуманитарных и естественных наук, №10., -С.48-54.

https://scholar.google.com/citations?view_op=view_citation&hl=ru&user=GGgl544AAAAJ&citation_for_view=GGgl544AAAAJ:ufrVoPGSRksC

10. Maxsudov V.G. Improving the methodology of teaching physics-Mechanical Vibrations in higher education. Monograph. – Tashkent: UzSNMU., pp.146.

https://scholar.google.com/citations?view_op=view_citation&hl=ru&user=GGgl544AAAAJ&citation_for_view=GGgl544AAAAJ:NaGl4SEjCO4C

11. Махсудов В.Г. Дидактические возможности маятника Обербека. – Москва: Актуальные проблемы гуманитарных и естественных наук, №11., - С.14-21.

https://scholar.google.com/citations?view_op=view_citation&hl=ru&user=GGgl544AAAAJ&citation_for_view=GGgl544AAAAJ:ULOm3_A8WrAC

12. Махсудов В.Г., Эрметов Э.Я. Аниқ фанларни ўқитишда масалалар ечиш методларидан фойдаланиш алгоритми. – Тошкент: Фан, талим ва амалиёт интеграцияси, 2022. №2. Б.9-15.

https://scholar.google.com/citations?view_op=view_citation&hl=ru&user=GGgl544AAAAJ&citation_for_view=GGgl544AAAAJ:2P1L_qKh6hAC

13. Махсудов В.Г. Дидактические возможности маятника Обербека. – Москва: Актуальные проблемы гуманитарных и естественных наук, №11. 27-39 с.

14. Maxsudov V.G. Once again about problems in physics. – Austria, Vienna: European journal of education and applied psychology, №2. Pp.17-25.

https://scholar.google.com/citations?view_op=view_citation&hl=ru&user=GGgl544AAAAJ&citation_for_view=GGgl544AAAAJ:g5m5HwL7SMYC

15. Maxsudov V.G. Laboratoriya mashg'ulotlarida nazariy va amaliy bilimlar uzviyligi. – Toshkent: Pedagogika, 2016. №6. –В.84-88.

https://scholar.google.com/citations?view_op=view_citation&hl=ru&user=GGgl544AAAAJ&citation_for_view=GGgl544AAAAJ:dTyEYWd-f8wC



16. Р. Яхшибоев, Д. Яхшибоева, Э.Эрметов, М. Базарбаев. Разработка модели распознавания графических объектов на основе метода «Transfer learning» для диагностики в сфере здравоохранении. – Тошкент: 2023. №3.

https://scholar.google.com/citations?view_op=view_citation&hl=ru&user=YkyMhGQAAAAAJ&citation_for_view=YkyMhGQAAAAAJ:SeFeTyx0c_EC

17. Р.Яхшибоев, М.Базарбаев, Э.Эрметов. Применение нейронных сетей для диагностики медицинских заболеваний. – Тошкент: 2023.№3.

https://scholar.google.com/citations?view_op=view_citation&hl=ru&user=YkyMhGQAAAAAJ&citation_for_view=YkyMhGQAAAAAJ:pqnbT2bcN3wC

