



## Analysis of Detection and segmentation of Uterine fibroids between uzbek women

Sadullaeva Sh. A., Sadullaeva U. A., Artikova M.A., AripovaZ.D., Radjabova M.R.

83

Uterine fibroids is the most common benign myometrial tumor, which affects approximately 20% of women over 30-35 years of age [6,7], is diagnosed more often in late reproductive age [9]. Due to the fact that in some cases there is an asymptomatic course, the disease is detected in 5 - 10% during routine examinations or ultrasound examination [1,4,5]. Despite numerous studies, proposals and implementation of new means and methods of treatment of uterine fibroids remain the most common gynecological pathology [8]. The leading role in the development of uterine fibroids belongs to hyperestrogenism due to changes in the metabolism of steroid hormones in the liver. The dys-hormonal nature of the tumor determines the presence of a number of metabolic disorders, functional liver failure. In the formation of hormonal disorders, which are one of the main links in the pathogenesis of uterine fibroids, the liver is directly involved, actively participating in the metabolism of estrogen. Of the numerous metabolic functions of the liver in uterine myoma, enzymatic inactivation and conjugation of steroid hormones with glucuronic and sulfuric acids are most often changed [2,3]. This circumstance is to a certain extent explained by the fact that in patients with uterine myoma, various diseases of the liver and biliary tract are often found, which contribute to the disruption of estrogen metabolism [1].

Segmentation methods became popular in image processing and analysis. Fibroid segmentation from Ultrasound Image is a complex problem in the field of medical imaging. Fibroids are Non Cancerous tumors, which grow in Female body. Sinologists use the technique called Ultrasonography, to solve diagnostic problems such as identifying the abnormal tissues or fibroids. They routinely use ultrasound information to develop an image. But images contain noise with maculation that leads to poor image quality.

DOI Number: 10.14704/nq.2022.20.10.NQ55010

NeuroQuantology 2022; 20(10): 83-90

### Introduction

The development and introduction of information technologies and computer technology has led to the emergence of new methods and tools for diagnostics and visualization. The doctor has new opportunities to purposefully influence the process of visualization of a medical image for high-quality diagnostics. Currently, the doctor, depending on the type of examination, often needs to independently determine image processing algorithm, and for this he needs to provide tools that allow carry out such processing in the shortest possible time. The capabilities of modern computers and graphic visualization tools make it possible to satisfy almost any request related to the processing of

medical images, and a workstation with software and hardware for processing and visualizing medical images can serve as a tool for making a diagnosis [1].

Material and research methods.

The study group (Group II) included 72 women with uterine myoma, who underwent Doppler echo studies in the gynecological department and in the women's center of the II clinic of the Tashkent Medical Academy. Control group (group 1) - 30 healthy women of the same age as the study group. Color Doppler imaging (CDO) is an ultrasound technology for visualizing blood flow based on recording blood flow velocities, coding them in different colors and superimposing the resulting picture on a black and



white image, which greatly simplifies the detection of blood vessels.

With spectral (pulse-wave) Doppler, a curve of blood flow velocity (BSC) characteristic of each vessel was obtained in order to digitally assess the phases of systole and diastole. To correctly obtain linear blood flow velocities, it is necessary to observe the insonation angle, which should be less than  $60^\circ$ , which was used during the study of large vessels. In this regard, relative indicators (indices) were used, which are angle-independent. The most commonly used in gynecology are the resistance index (IR) and pulsation index (PI), systole-diastolic ratio (SDO). The blood flow of the uterus and appendages was assessed using transvaginal echography (TVE). A sensor with a frequency of 6.5 MHz was used. We conducted studies in the uterine, arcuate, ovarian arteries, and also studied the blood flow in the myomatous node.

We also studied the functional state of the liver in patients with myoma. Conducted biochemical blood tests (determination of bilirubin, protein and protein fractions, aspartate - and alanine - aminotransferases). An antipyrine test was carried out according to the usual method (in blood). The intermediate and final products of lipid oxidation, the sorption capacity of erythrocytes (SSE), and the level of medium molecular weight peptides were determined. A functional study of the liver was studied in 65 women with uterine fibroids aged 30 to 50 years and 10 healthy women (control group). All patients were divided into 3 groups: the first - 20 with a subserous form of the myomatous node, the second - 20 with the submucosal location of the node, and the third - 25 with the interstitial form of the myomatous node.

Research results.

Our analysis of the medical history of women with uterine myoma showed that the studied patients have a high percentage of extragenital diseases. Thus, chronic cholecystitis and chronic hepatitis occurred in 19.6% and 17.8% of cases, respectively.

The surveyed revealed posthemorrhagic anemia of varying severity. Thus, in 100% of patients with submucosal uterine myoma (20 patients), the hemoglobin content was reduced to 80 g/l, the number of erythrocytes to  $2.5 \times 10^{12}$ . In 60% of patients with other forms of tumor location, respectively, these figures were 102 g/l,  $3.3 \times 10^{12}$ . When comparing the functional parameters of the hepatobiliary system in all groups of patients, no significant differences were found. But compared with the control group, there was an increase in the activity of aspartate aminotransferase ( $0.65 \pm 0.02$  and  $0.69 \pm 0.5 \mu\text{mol/l}$ ) and alanine aminotransferase ( $0.75 \pm 0.07$  and  $0.85 \pm 0.08 \mu\text{mol/l}$ ). k), which are indicators of enzymes that perform intracellular functions and are activated when the liver cell is damaged by various factors. In terms of total protein and albumin in women of all three studied groups, no differences were found. As evidenced by dysproteinemia in patients of the 1st, 2nd and 3rd groups, the levels of  $\alpha_1$  globulins ( $4.57 \pm 0.2$  and  $4.5 \pm 0.15$ ) and  $\alpha_2$  globulins ( $11.7 \pm 0.46$  and  $9.7 \pm 0.63$ ) than in the control group. The pigment-forming system of the liver was reduced, the level of total bilirubin in the 1st group was  $14.1 \pm 0.6 \mu\text{mol/l}$ , in the 2nd group -  $13.2 \pm 0.9 \mu\text{mol/l}$ , in the 3rd group -  $12.7 \pm 0.8 \mu\text{mol}$ , and in healthy people -  $16.8 \pm 1.0 \mu\text{mol/l}$ .



### Ultrasound scan data, (%)

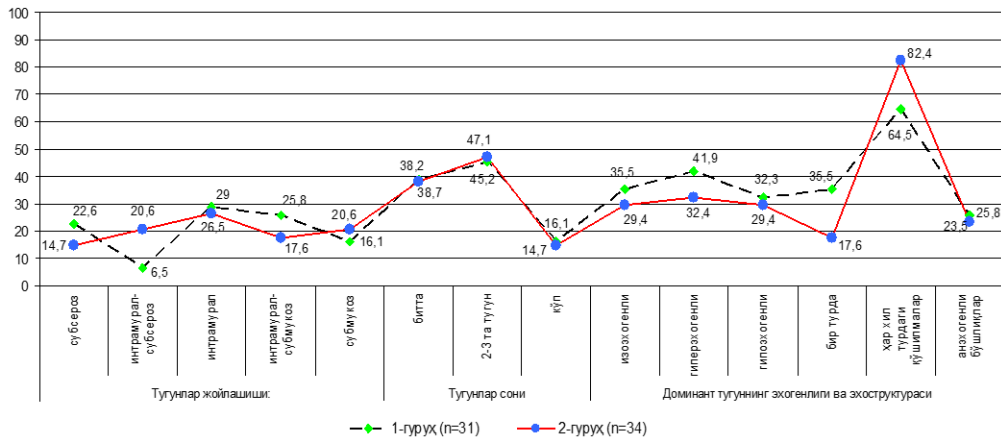
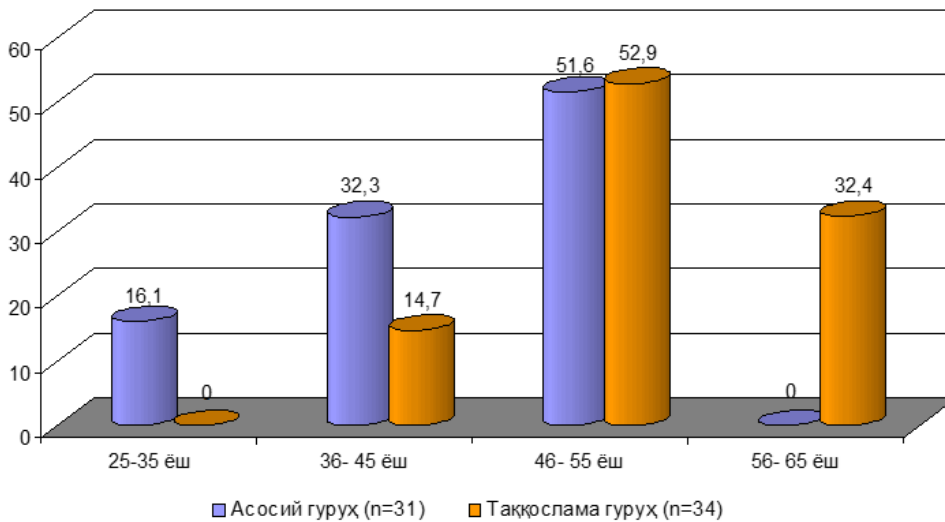


Fig.1 Ultrasound scan data of the location of the nodules

In the surveyed, an elongation of the half-distribution period (T1 / 2) of antipyrine was found to be 37-68%, an increase in the apparent volume of distributions by 1.5-2 times compared with healthy ones. Thus, an increase in the level of acetyl hydroperoxides (AHP) by 3.4 and 3.92 times was found compared to healthy ones. Changes in the content of malondialdehyde (MDA) are less pronounced.

### Age of women diagnosed with uterine fibroids



Average age of women examined:

Main group - 38.8±1.1 Comparison group - 42.0±1.4

Fig.2 Ultrasound scan data Average age of women examined



**Main part.** Medical research based on modern imaging techniques allows look inside the objects of a living organism and diagnose its condition. The solution of this problem involves a number of stages of image processing in order to analyze and recognize objects. Formation of images in various devices and their further transmission through different channels provoke distortion, so the first stage of image processing is filtering or eliminating low-frequency noise. This stage allows us to distinguish the objects of interest to us from all others and from the background. Analysis of publications shows that the most effective in practical terms are additive Gaussian and impulse noise models. Additive Gaussian noise is characterized by adding values from corresponding normal distribution with zero mean. Such noise appears in digital imaging devices. Impulse noise is characterized by the replacement of some pixels by fixed or random values. This noise is associated with losses in the transmission of images over communication channels. In a real image, you can find both additive and impulse noise, such noise called combined. All types of filters can be divided into

classes: frequency, linear, non-linear, combined, hybrid and adaptive. The choice of filter depends on the characteristics of the image and noise [2]. The stages following the filtering involve the use of image processing methods such as segmentation, selection of area boundaries. Each processing method is based on the use some numerical characteristics of the image and their functional features [3]. Segmentation is related to the division of the image into areas for which a certain homogeneity criterion, for example, highlighting areas of approximately the same brightness in the image. The concept of an image area is used to define a coherent group of image elements that have a certain common attribute (property). One of the main and simple ways is to build a segmentation using a threshold. The threshold is a sign (property) that helps to divide the desired signal into classes. The threshold division operation is to compare the brightness value of each pixel images with a given threshold value. Let us present a block diagram of a segmentation algorithm based on difference of "zero" levels of wavelet transforms.

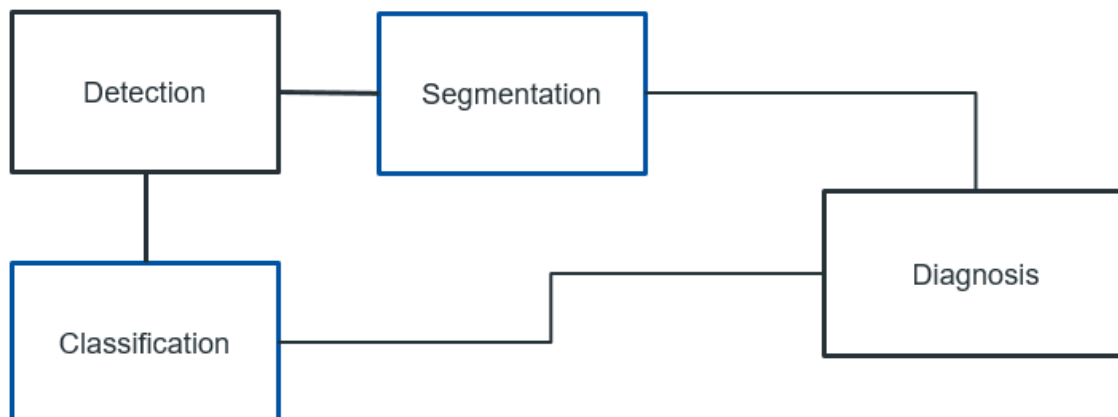


Fig.3 Steps of program

Dataset – detection. It might go without saying that you cannot do data science without data. We could lose hundreds of pages pondering what precisely constitutes data, but for now, we will err on the practical side and focus on the key properties to be concerned with. Generally, we

are concerned with a collection of examples. In order to work with data usefully, we typically need to come up with a suitable numerical representation. Each example (or data point, data instance, sample) typically consists of a set of attributes called features (or covariates), from



which the model must make its predictions. In the supervised learning problems above, the thing to predict is a special attribute that is designated as the label (or target).

If we were working with image data, each individual photograph might constitute an example, each represented by an ordered list of numerical values corresponding to the brightness of each pixel. A 200×200 color photograph would consist of  $200 \times 200 \times 3 = 120000$  numerical values, corresponding to the brightness of the red, green, and blue channels for each spatial location. In another traditional task, we might try to predict whether or not a patient will survive, given a standard set of features such as age, vital signs, and diagnoses.

When every example is characterized by the same number of numerical values, we say that the data consist of fixed-length vectors and we describe the constant length of the vectors as the dimensionality of the data. As you might imagine, fixed-length can be a convenient property. If we wanted to train a model to recognize cancer in microscopy images, fixed-length inputs mean we have one less thing to worry about.

Generally, the more data we have, the easier our job becomes. When we have more data, we can train more powerful models and rely less heavily on pre-conceived assumptions. The regime change from (comparatively) small to big data is a major contributor to the success of modern deep learning. To drive the point home, many of the most exciting models in deep learning do not work without large datasets. Some others work in the small data regime, but are no better than traditional approaches.

Finally, it is not enough to have lots of data and to process it cleverly. We need the right data. If the data are full of mistakes, or if the chosen features are not predictive of the target quantity of interest, learning is going to fail. The situation is captured well by the cliché: garbage in, garbage out. Moreover, poor predictive performance is not

the only potential consequence. In sensitive applications of machine learning, like predictive policing, resume screening, and risk models used for lending, we must be especially alert to the consequences of garbage data. One common failure mode occurs in datasets where some groups of people are unrepresented in the training data. Imagine applying a skin cancer recognition system in the wild that had never seen black skin before. Failure can also occur when the data do not merely under-represent some groups but reflect societal prejudices. For example, if past hiring decisions are used to train a predictive model that will be used to screen resumes, then machine learning models could inadvertently capture and automate historical injustices. Note that this can all happen without the data scientist actively conspiring, or even being aware.

In our research we used dataset detection for uterine fibroids. The task chosen for experimenting Transfer Learning consists of the classification of fibroid images into 3 different categories. The choice of this task is mainly due to the easy availability of a myomas dataset, as well as to the domain of the problem, which is generic enough to be suitable for effectively applying Transfer Learning with neural networks. After detection program will send the result for next step CNN. Depending on whether we are handling black-and-white or color images, each pixel location might be associated with either one or multiple numerical values, respectively. Until now, our way of dealing with this rich structure was deeply unsatisfying. We simply discarded each image's spatial structure by flattening them into one-dimensional vectors, feeding them through a fully-connected MLP. Because these networks are invariant to the order of the features, we could get similar results regardless of whether we preserve an order corresponding to the spatial structure of the pixels or if we permute the columns of our design matrix before fitting the MLP's parameters. Preferably, we would leverage our prior knowledge that nearby pixels are typically related to each other, to build efficient models for



learning from image data. The convolutional neural networks (CNNs), a powerful family of neural networks that are designed for precisely this purpose. CNN-based architectures are now ubiquitous in the field of computer vision, and have become so dominant that hardly anyone today would develop a commercial application or enter a competition related to image recognition, object detection, or semantic segmentation, without building off of this approach.

Modern CNNs, as they are called colloquially owe their design to inspirations from biology, group theory, and a healthy dose of experimental tinkering. In addition to their sample efficiency in achieving accurate models, CNNs tend to be computationally efficient, both because they require fewer parameters than fully-connected architectures and because convolutions are easy

to parallelize across GPU cores. Consequently, practitioners often apply CNNs whenever possible, and increasingly they have emerged as credible competitors even on tasks with a one-dimensional sequence structure, such as audio, text, and time series analysis, where recurrent neural networks are conventionally used. Some clever adaptations of CNNs have also brought them to bear on graph-structured data and in recommender systems.

The basic operations that comprise the backbone of all convolutional networks. These include the convolutional layers themselves, nitty-gritty details including padding and stride, the pooling layers used to aggregate information across adjacent spatial regions, the use of multiple channels at each layer, and a careful discussion of the structure of modern architectures.

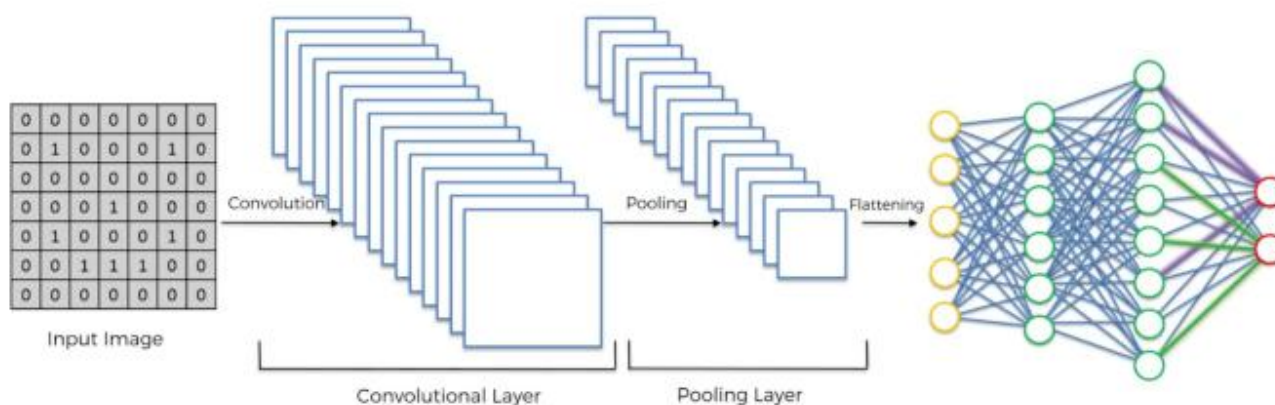


Fig.4 Convolutional neural networks (CNNs)

In this work we have some steps of CNN:

- ⊙ **Convolutional Neural Network (CNN)** is an neural network which extracts or identifies a feature in a particular image.
- ⊙ CNN has the following five basic components:
- ⊙ **Convolution** : to detect features in an image
- ⊙ **ReLU** : to make the image smooth and make boundaries distinct
- ⊙ **Pooling** : to help fix distorted images
- ⊙ **Flattening** : to turn the image into a suitable representation
- ⊙ **Full connection** : to process the data in a neural network
- ⊙ A CNN works in pretty much the same way an ANN works but since we are dealing with images, a CNN has more layers to it than an ANN.

Also we have types of classification, here you can see given classification types of job:



## Classification

⊙ Binary = 0 } *Uncomplicated*  
⊙ Normal = 1 }

⊙ Difficult = 2 } *Complicated*

### Conclusion.

In this work main job is detection of uterine fibroid by using Ultrasound. Detect it by dataset after segmentation and classification by U-net optimized model patient can take a decision of myoma. In future work, we will further improve the efficiency of our method by GPU acceleration and extend SF-SSM to the segmentation of 3-D US images to improve the efficiency and effect of HIFU therapy. We also try to extend the proposed idea to other related areas, such as computer-aided design, computer graphics and natural image manipulation.

### References

- [1] **Sadullaeva U.A., Kayumova D.T., Najmutdinova D.K., Karimov A.X., Akhmedova G.A., Chorjeva G.Z.** Dopplerometric Examinations in Women with Uterine Myoma and Liver Pathology in Anamnesis Annals of R.S.C.B., ISSN:1583-6258, Vol. 25, Issue 1, 2021, Pages. 380 – 386
- [2] Babkina, A. V. Algorithm for differential diagnosis of simple and proliferating uterine fibroids based on ultrasound data. Babkina, V.A. Krutova, N.V. Naumova // Fundam.issled. - 2013. - No. 11-1. - P. 1721;
- [3] Borisova Yu.F. On some functions of the liver in various disorders of the menstrual cycle // Midwife and gin. 1982. No. 4. P.33-37.
- [4] Borisova Yu.F., Mausymbaeva NB, Neverov I.V. Clinical and pathogenetic variants of uterine fibroids and blood lipid spectrum. // Issues of

rehabilitation for uterine fibroids. M., 1978.P. 50-53.

[5] Possibilities of modern ultrasound technologies in determining the clinical and pathogenetic variant of fibroids / S. N Buyanova; L.I. Titchenko; I.P. Titchenko; E.L. Babunashvili, S.A. Petrakova; N.S. Vanke, // Ros. vestn. obstetrician-gynecol. - 2007. - T. 7, N 5. - P. 36-38.

[6] Karimov, A.Kh. Color Doppler mapping in the assessment of complications of uterine fibroids / A.Kh. Karimov, G.A. Akhmedova // Ultrasound and functional diagnostics: Collection of abstracts of the 5<sup>th</sup> Congress of the Association of Specialists in Ultrasound Diagnostics in Medicine (Moscow, September 18-21, 2007). Topic 1. Ultrasound diagnostics in obstetrics, gynecology and perinatology. - 2007. - N 4.P.60 - 61.

[7] Садуллаева Ш. А., Назирова Э. Ш., Арипова З. Д. Выявление миомы матки с помощью распознавание объектов 118 ст. Республиканской научно-практической конференции “ПРОБЛЕМЫ ПРИМЕНЕНИЯ СОВРЕМЕННЫХ ИНФОРМАЦИОННЫХ, КОММУНИКАЦИОННЫХ ТЕХНОЛОГИЙ И ИТ-ОБРАЗОВАНИЯ” 24-25 ноября 2021 года SAMARQAND – 2021

[8] Садуллаева Ш.А. Назирова Э.Ш. Арипова З.Д. МАТКИ С ПОМОЩЬЮ ВЫЯВЛЕНИЕ МИОМЫ РАСПОЗНАВАНИЕ ОБЪЕКТОВ 509ст. Proceedings of the 4th International Scientific and Practical Conference CURRENT ISSUES AND PROSPECTS FOR THE DEVELOPMENT OF SCIENTIFIC RESEARCH ORLÉANS, FRANCE 7-8.12.2021 ORLÉANS DOI 10.51582/interconf.7-8.12.2021.057



[9] СадуллаеваШахлоАзимбаевна, АриповаЗульфияДилшодовна (Ташкент, Узбекистан) РАСПОЗНАВАНИЕ МИОМЫ МАТКИ С ПОМОЩЬЮ МЕТОДОВ РАСПОЗНАВАНИЕ ОБЪЕКТОВ И ПЯТЕН 135ст. АКТУАЛЬНЫЕ НАУЧНЫЕ ИССЛЕДОВАНИЯ В СОВРЕМЕННОМ МИРЕ ВЫПУСК 11(79) Часть 10 Ноябрь 2021 г. ЖУРНАЛ ISSN 2524-0986

[10] Artikova M. Khoshimkhodjayeva M. Aripova Z. IDENTIFICATION OF UTERINE FIBROIDS USING OBJECT DETECTION 450 p. THE ISSUE CONTAINS: Proceedings of the 3rd International Scientific and Practical Conference SCIENTIFIC TRENDS AND TRENDS IN THE CONTEXT OF GLOBALIZATION UMEÅ, SWEDEN 21-22.12.2021 UMEÅ 2021 **DOI 10.51582/interconf.21-22.12.2021.047**

[11] E.A. Stewart Uterine fibroids Lancet, 357 (2001), pp. 293-298

[12] W. Wang, Y. Wang, T. Wang, J. Wang, L. Wang, J. Tang Safety and efficacy of US-guided high-intensity focused ultrasound for treatment of submucosal fibroidsEurRadiol, 22 (2012), pp. 2553-2558

[13] Y.-S. Kim, J. H. Kim, H. Rhim, H.K. Lim, B. Keserci, D.-S. Bae, et al. Volumetric MR-guided high-intensity focused ultrasound ablation with a one-layer strategy to treat large uterine fibroids: initial clinical outcomesRadiology, 263 (2012), pp. 600-609

[14] K. Saini, M. Dewal, M. Rohit Ultrasound imaging and image segmentation in the area of ultrasound: a review Int J AdvSciTechnol, 24 (2010)

[15] S. Sridevi, M. Sundaresan Survey of image segmentation algorithms on ultrasound medical images International conference on pattern recognition, informatics and mobile engineering (PRIME), IEEE (2013), pp. 215-220

#### **AripovaZulfiyaDilshodovna**

Assistant Department of“Multimedia technologies” in The Tashkent University of Information Technologies named after Muhammad ibn Musa al-Khwarizmi[imezulik@gmail.com](mailto:imezulik@gmail.com)

